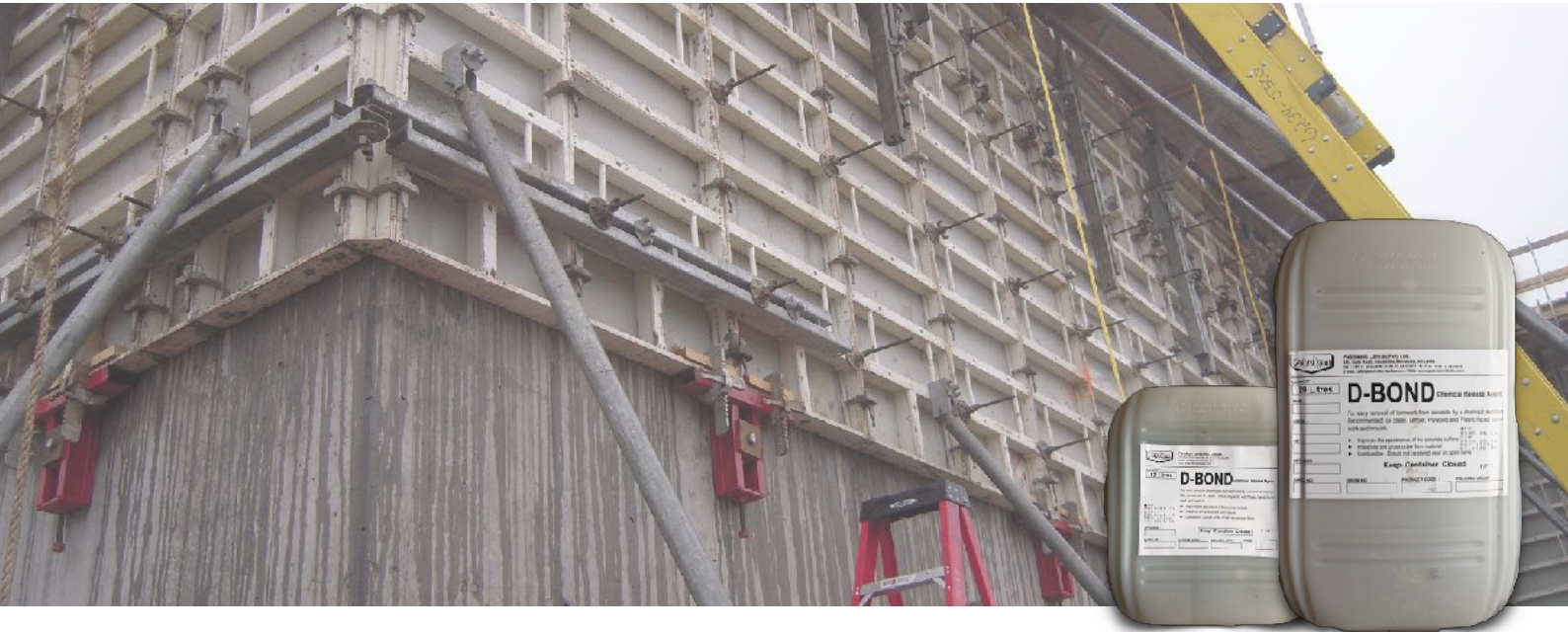



CAT NO	CAT	UPDATE	REF NO
5	CC	1/30/19	5DBOND



D-BOND® CHEMICAL RELEASE AGENT

D-BOND® is a Chemical Release Agent for mould and shutter faces before casting concrete in order to achieve a perfect releasing affect by a chemical reaction. It permits removal of form from concrete without damaging the concrete surface or the form and resultant concrete has a smooth, hard, uniform finish. D-BOND® is recommended for use on wood, metal, plywood, concrete or fiber forms and casting beds for precast and prestress concrete. D-BOND® does not effect the concrete in any injurious manner.

 Properties	
	D-BOND®
Appearance	Amber Liquid
Colour	Amber
Specific Gravity at 30°C	0.85 - 0.95
Viscosity at 30°C (Ford Cup No4)	11- 14 Secs
Flash Point	68°C
Solubility In Water	insoluble
Chloride Content	Nil
Nitrate Content	Nil



General Characteristics

D-BOND®	<ul style="list-style-type: none"> • Provides better release properties than oils and greases. • Has a very high coverage than mould oils due to its low viscosity. • Minimizes the blow holes in the concrete surface. • Is non staining and may be used for normal off white or coloured concrete. • Provides a waterproof coating on formwork and protects/preserves the plywood and timber moulds from swelling and protects steel from rusting. • Concrete produced by D-Bond treated formwork will provide excellent adhesion to the surface coatings, renders or tiles to be applied later.
----------------	--



Directions

Surface Preparation	<ul style="list-style-type: none"> • Surface of the form should be clean & dry before the application of D-BOND®
Application	<ul style="list-style-type: none"> • D-BOND® can be used direct from the container. Apply a thin layer of D-BOND® either by smooth brush, roller or spray gun. D-BOND® should be applied to the form before the form is used each time. Only a very thin coating should be applied. In case of new porous plywood/timber formwork, if the first application of D-BOND® is completely absorbed, it is advisable to apply another coat of D-BOND® to obtain better results. D-BOND® should be applied before placing the reinforcement and if any spillage occur on reinforcement should be removed using turpentine or thinner. Concrete could be placed immediately after the application of D-BOND® or several days later.



Other Information

Coverage	<p>35 m² (370 sqft) - 50 m² (530 sqft) per litre on nonporous surfaces. (Steel Surfaces)</p> <p>25 m² (270 sqft) - 35 m² (375 sqft) per litre on semi-porous surfaces. (For medium density plywood)</p> <p>12 m² (125 sqft) - 20 m² (215 sqft) per litre on porous or rough surfaces.</p>
Packaging	D-BOND® is available in 20L cans and 205L drums
Shelf Life	Minimum of 2 years when stored in a cool dry environment.



Health & Safety Precautions

D-BOND[®] Chemical Release Agent is manufactured using chemicals and care should be taken when handling. For details please read Petrokem epoxy safety and handling information sheet. A copy of this manual will be supplied on request.



Petrokem Lanka (Pvt) Limited
240, Galle Road, Katubedda,
Moratuwa, Sri Lanka.



Customer Support : +94 (0) 11 2611077 | +94 (0) 11 2611078
Technical Support : +94 (0) 11 2622843
Fax : +94 (0) 11 2611078
Email : sales@petrokemlanka.com
Website : www.petrokemlanka.com